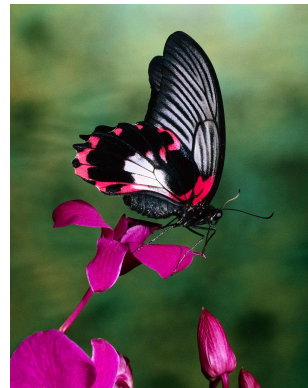


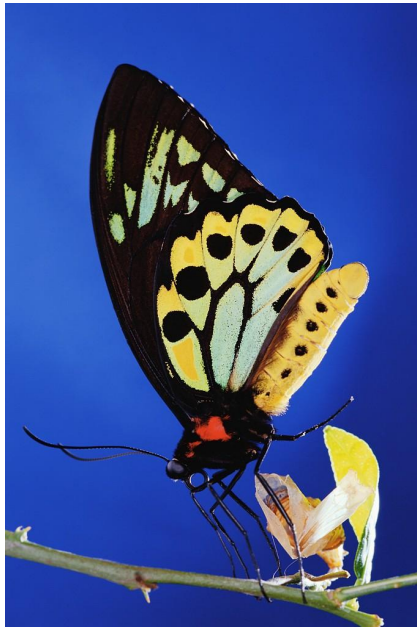
Blue Butterfly

The blue butterfly is blue and has black on the sides of the butterfly wings. It also has a little bit of white on the sides of the blue butterfly. The butterfly has three body parts. And has three legs on each side.





The blue butterfly lives in the rain forest. It is not found in many places. Some people think you can find blue butterfly's here because they're blue.



In the rain forest the blue butterfly likes to eat a lot of different plants. The blue butterfly eats a lot of leaves. But not leaves that meat hoppers or lizards because they will eat the blue butterfly.





The life cycle of a blue butterfly is really simple. First it is an egg than it is a larva after the larva it is a larger larva then a chrysalis after the chrysalis it transforms into a beautiful butterfly.



The blue butterfly is really interesting it smells with his or hers antenna. And they mix nectar with poplin and it tastes like honey.

